

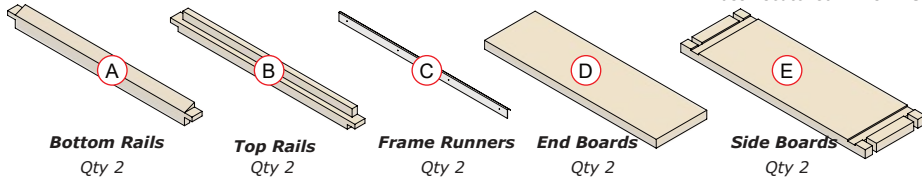
Wooden Hive Box Assembly Instructions



**UK
BEES**

Suitable for assembling Brood & Standard Super Boxes or 14 x 12

Parts supplied:

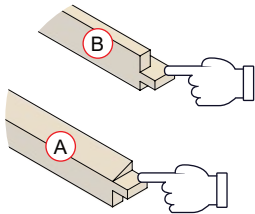


You will need:

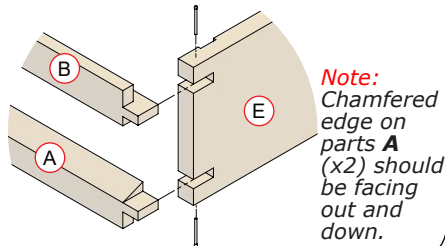
- Hammer
- Crosshead screwdriver
- Soft hammer/mallet
- External wood glue
- Flat solid surface to work on

Use exterior wood glue (*not supplied*) at **every** joint for an even stronger, long lasting joint.

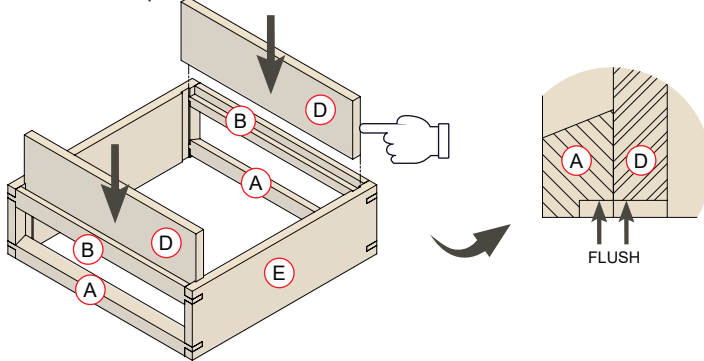
- 1** Apply wood glue to the two lugs on parts **A** (x2) and **B** (x2).



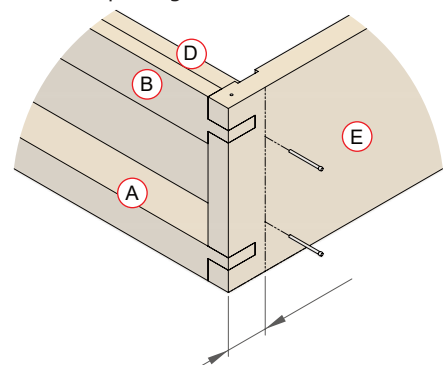
- 2** Insert parts **A** (x2) and **B** (x2) into parts **E** (x2). Tap with mallet to seat joints and ensure box is squared. Secure with long roundhead nails on all four corners.



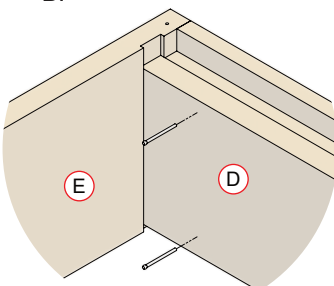
- 3** Apply wood glue to both edges of parts **D** (x2). Slide parts **D** (x2) into the slots on parts **E** (x2) until the bottom face is flush with part **A**.



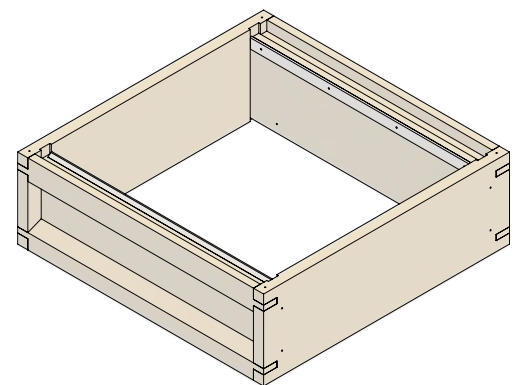
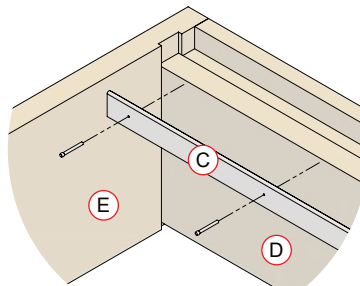
- 4** Secure parts **D** (x2) with short roundhead nails into parts **E** as shown. Drill pilot holes for nails to avoid splitting the wood.



- 5** Secure parts **D** (x2) with 8 losthead nails through part **D** and into Items **A** & **B**.



- 6** Secure parts **C** (x2) to parts **D** (x2) with 8 brass escutcheon pins.



Completed box



support@ukbees.uk



07365 450001



<https://ukbees.uk>